



Figure 2.1 Spiral exercise.

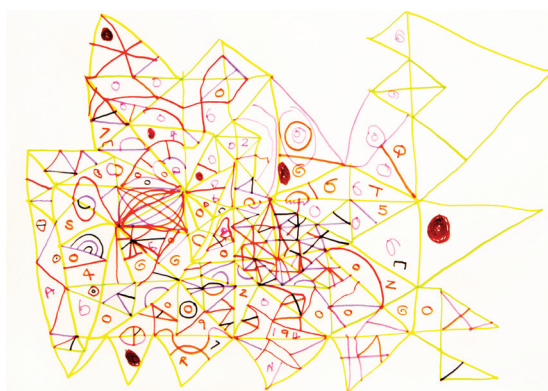


Figure 2.2 In conversation.



Figure 2.3 Memories and reflections.



Figure 3.2 First holiday in the Austrian Alps.

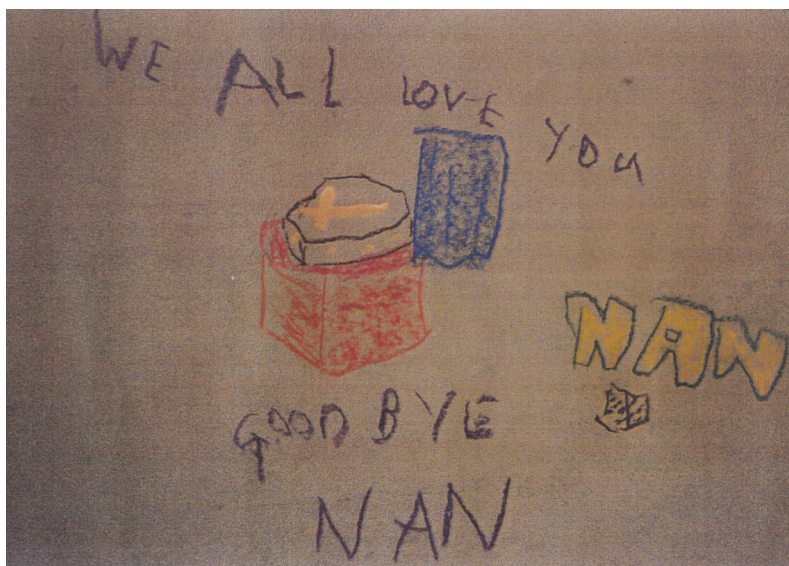


Figure 3.11 Death of a significant other.

Wide horizons: Going home



Figure 3.5 Poster paint open vista by male patient with MS.



Figure 3.6 Foam roller brush hillsides by female patient with MS.



Figure 3.7 Pastel sketch of seascape by patient with head injury.



Figure 3.8 Poster paint image by patient with head injury.

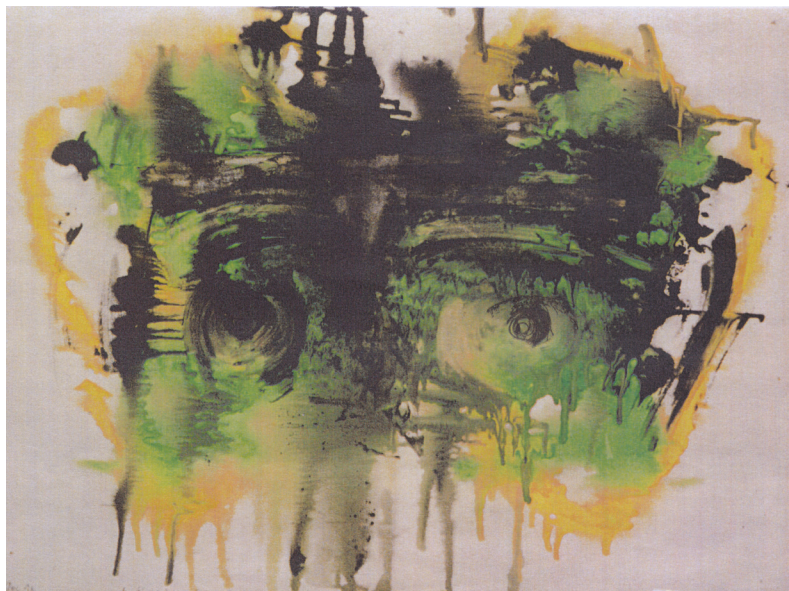


Figure 3.12 Addiction. An elephant never forgets.



Figure 3.13 Present hopes and future dreams.



Figure 4.1a Cut-down tree.



Figure 4.3 Womb.



Figure 4.4 Burning tree.



Figure 4.5 Rosette.



Figure 5.1 The effects of disability.

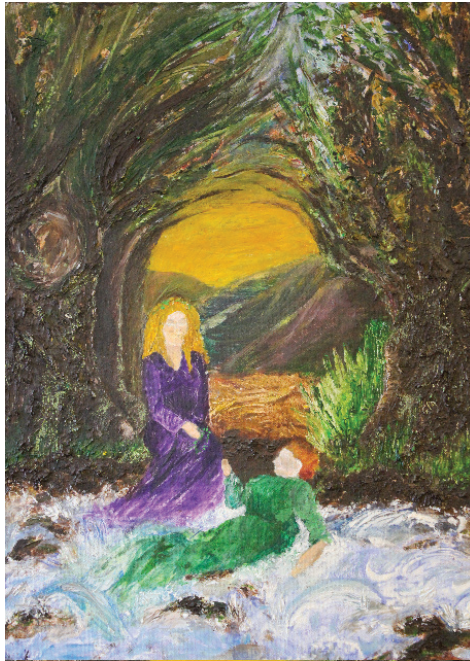


Figure 5.2 Rebirth.



Figure 5.3 Ben: painting within a frame.

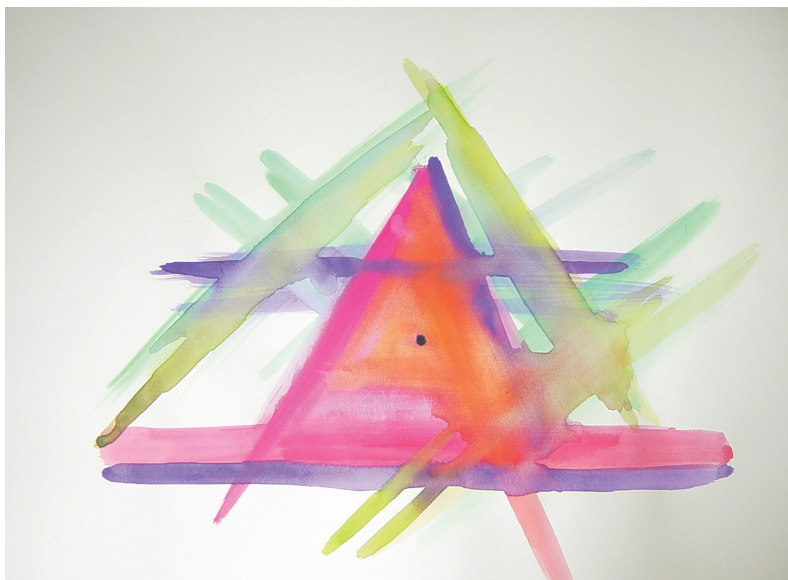


Figure 6.3 Hope.



Figure 7.1 Shelf in art therapy room, with ram's horn.



Figure 7.2 Tree and ram's horn. (The outside world.)

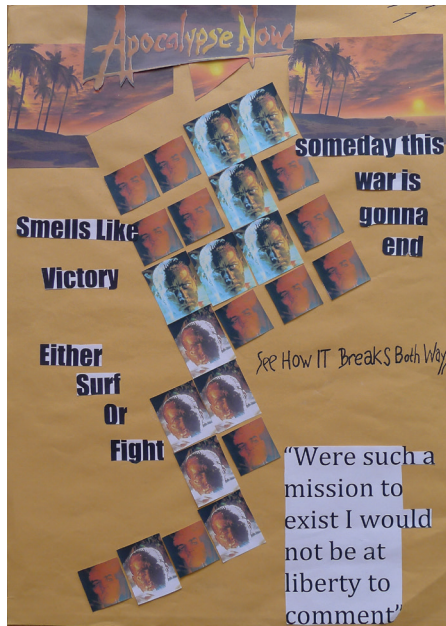


Figure 8.3 The war.



Figure 9.1 Models of dogs.



Figure 9.2 *The Wizard of Oz.*

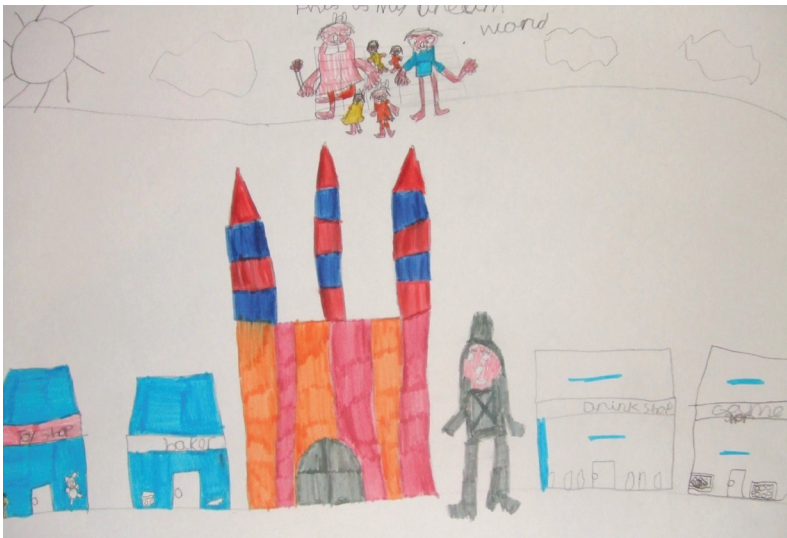


Figure 9.4 *'This is my dream world.'*



Figure 10.2 Steve: Riot of colour.



Figure 10.3 Greg: Pink car journeying.



Figure 10.4 Jon: Eagle flying high.



Figure 10.5 Jed: Jed's exploration with colour.



Figure 13.1 Creation Story, second day.



Figure 13.2 Eden



Figure 13.3 Age 7 – leaving home.

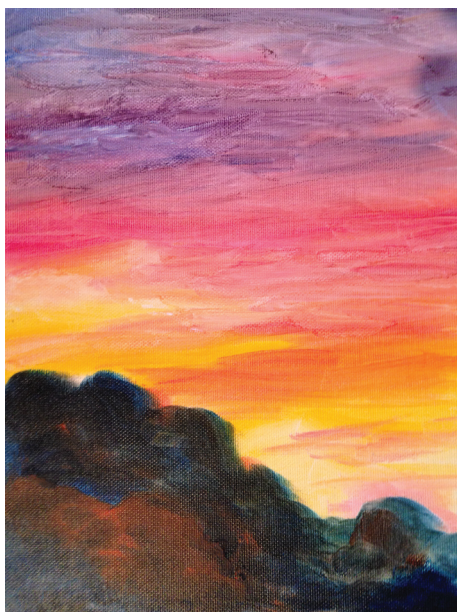


Figure 13.7 Peace and hope.



Figure 14.3 Distant bulk.



Figure 15.1 Postbox.